

# ZSoil 2016 protection activation procedures

[How to migrate v2014 protection to v2016 \(hardware key\) ?](#)

[How to migrate v2014 protection to v2016 \(software key\) ?](#)

[How to activate the hardware key ?](#)

[How to activate the software key ?](#)

[How to activate the license for a network version protected with ZACE USB protection key ?](#)



[Hardware key activation procedure on a server machine](#)

[Activation procedure on a node computer](#)

[How to activate the license for a network version protected with HASP HL Net protection key ?](#)

[HASP HL key installation](#)



[How to activate the license for a single user version protected with HASP HL protection key ?](#)



**HASP HL key**

## How to migrate v2014 protection to v2016 (hardware key)?

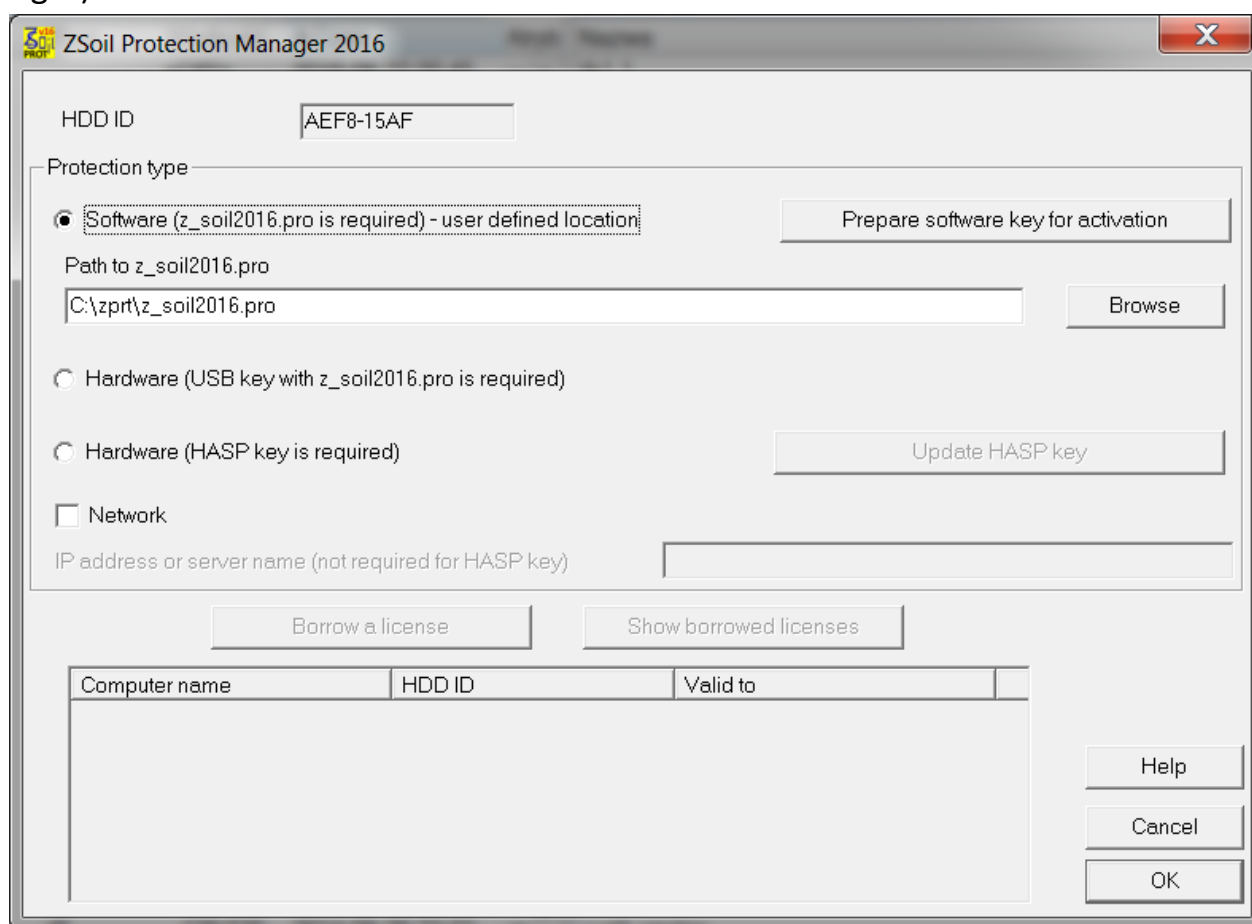
**This activation procedure concerns the users who have already activated the version v2014**

- 1) Please send *z\_soil2014.pro* file from the USB key to ZACE ([hotline@zsoil.com](mailto:hotline@zsoil.com)) requesting for an activation of the version v2016.
- 2) On return, the user will be provided with the protection key (*z\_soil2016.pro* file) from ZACE Ltd.
- 3) Once *z\_soil2016.pro* is copied to the USB key, the version v2016 is fully activated

# How to migrate v2014 protection to v2016 (software key)?

**This activation procedure concerns the users who have already activated the version v2014**

- 1) Please send *z\_soil2014.pro* to ZACE ([hotline@zsoil.com](mailto:hotline@zsoil.com)) requesting for an activation of the version v2016. If location of *z\_soil2014.pro* was not detected by ZSoil Protection Manager, the file can be found in:  
"c:\Documents and Settings\All Users\Application Data\Z\_Soil v2014\Full\z\_soil2014.pro"
- 2) ZACE Ltd. Will provide the user with a valid protection key (*z\_soil2016.pro* file) which should be copied to the hard disk
- 3) Create a folder on your hard disk (e.g. c:\zpvt)
- 4) Copy *z\_soil2016.pro* into the created folder
- 5) Run the ZSoil Protection Manager (Start\All Programs\ZSoil 2016\Tools\ZSoil Protection Manager)



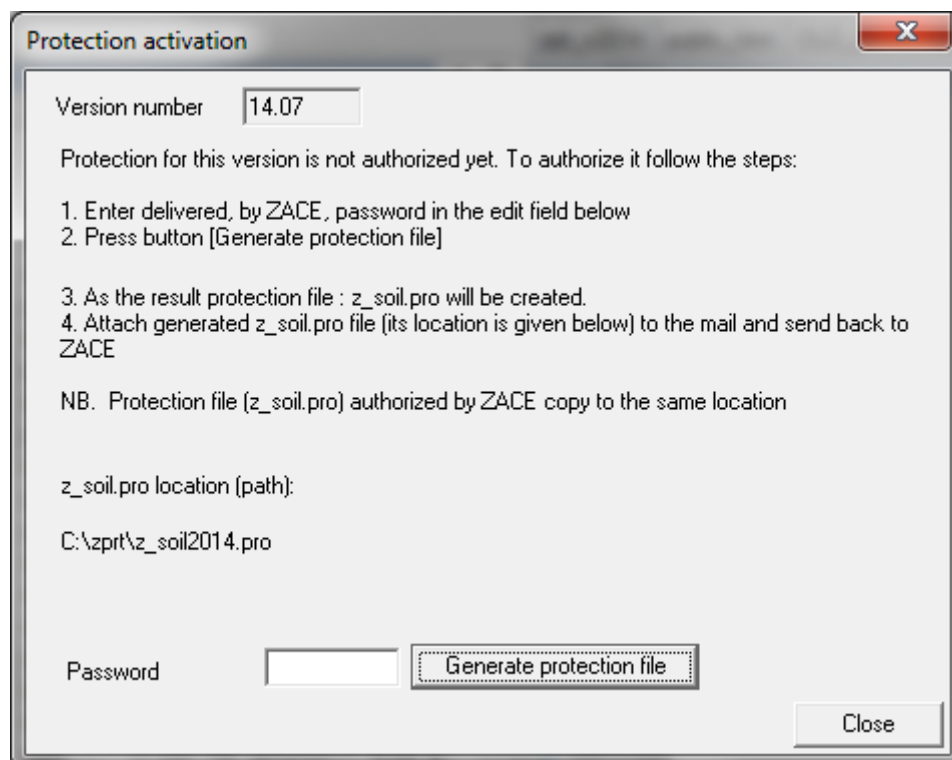
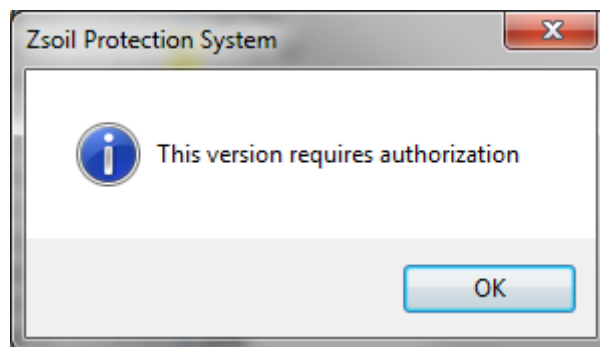
- 6) Choose the Protection type as Software one and press Browse button in order to define the location of *z\_soil2016.pro*
- 7) Please close ZSoil Protection Manager with OK button
- 8) At this moment your version is fully operational

## How to activate the hardware key?

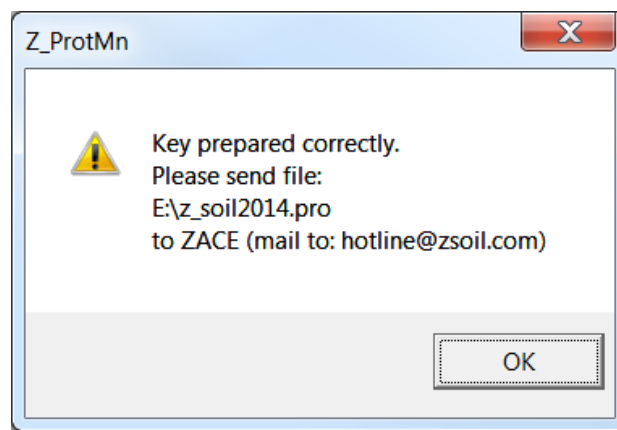


### ZSoil hardware keys

- 1) Plug your ZSoil hardware key to the USB port
- 2) Install ZSoil v2016 from the pen drive delivered by ZACE Ltd.
- 3) Run ZSoil by a double click on ZSoil 2016 v16.XX icon from the desktop
- 4) On the first run, the user be informed that an authorization of the protection key is required:



- 5) Enter password and press the button "Generate protection file"

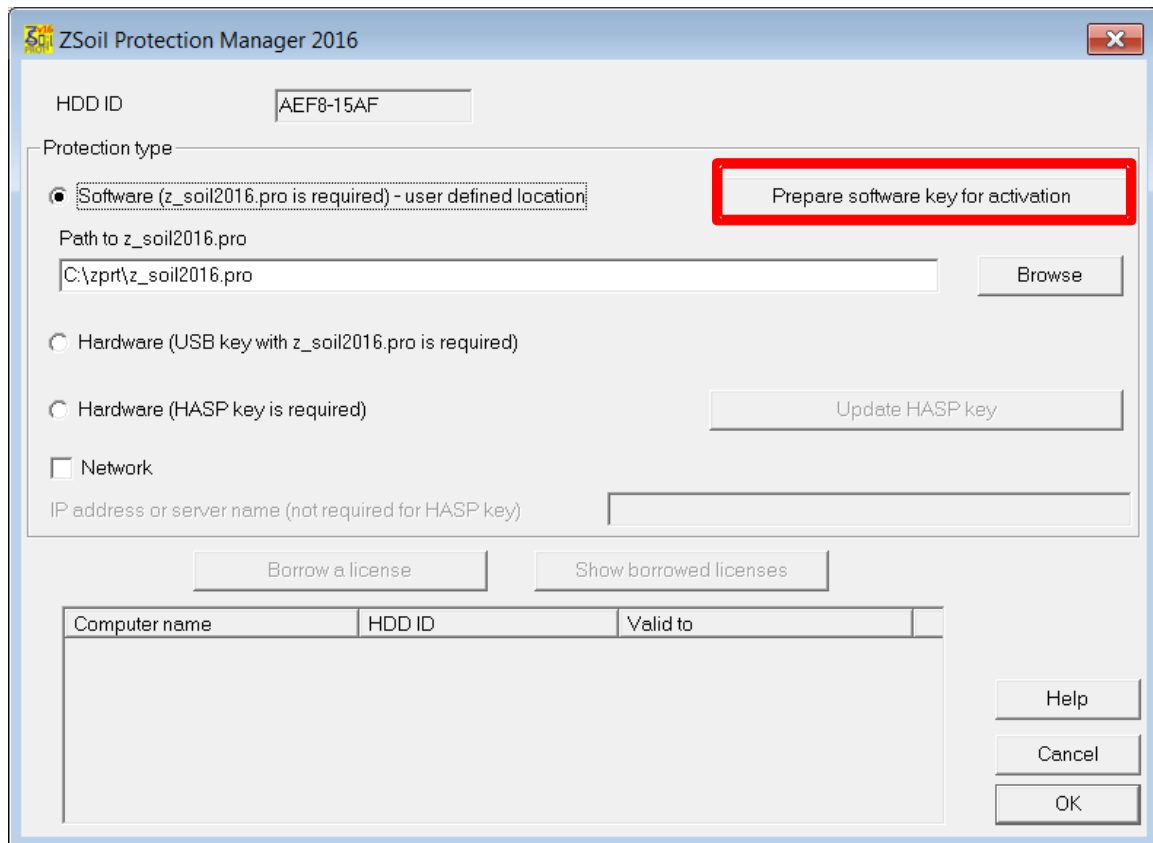


- 6) Attach the generated *z\_soil2016.pro* file from USB key to an email and send it to ZACE Ltd. ([hotline@zsoil.com](mailto:hotline@zsoil.com))
- 7) On return, the user will be provided with the activated protection key (*z\_soil2016.pro* file)
- 8) Once *z\_soil2016.pro* is copied to the USB key, the version v2016 is fully activated

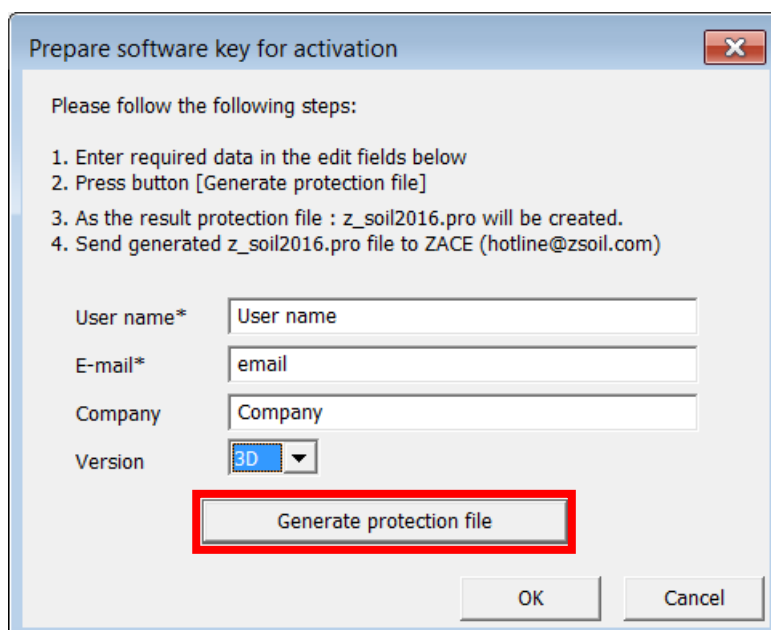
# How to activate software key?

**This activation procedure concerns site license users who would like to use the software protection**

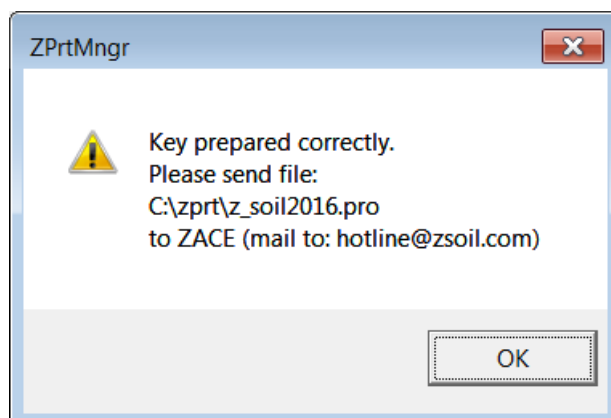
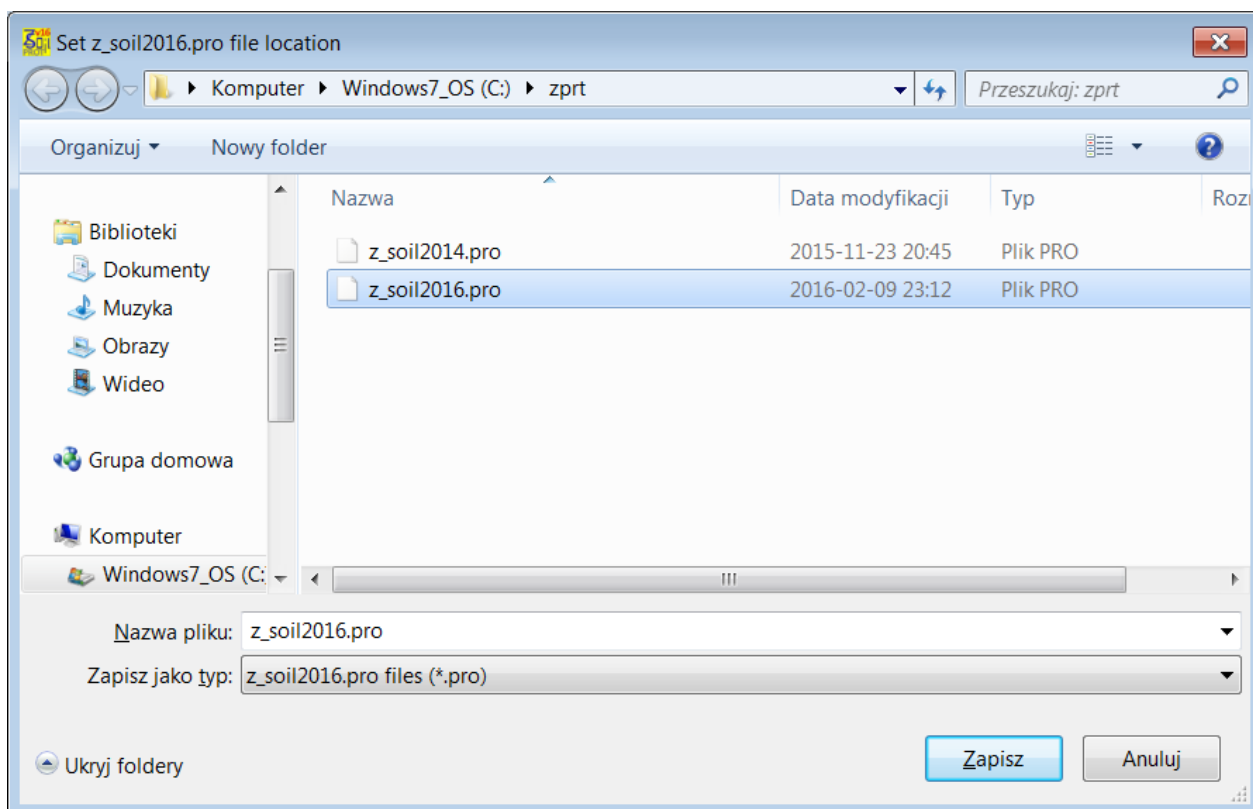
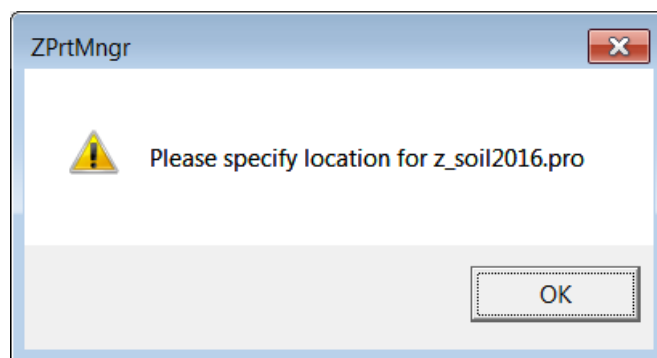
- 1) Run the ZSoil Protection Manager (Start\All Programs\ZSoil 2016\Tools\ZSoil Protection Manager)
- 2) Press the button “Prepare software key for activation”



- 3) Enter required data and press the button “Generation protection file”



#### 4) Save the generated z\_soil2016.pro file



5) Close the ZSoil Protection Manager by clicking on OK button

**ZSoil Protection Manager 2016**

HDD ID: AEF8-15AF

Protection type:

- ☒ Software (z\_soil2016.pro is required) - user defined location  
Path to z\_soil2016.pro: C:\zprt\z\_soil2016.pro [Browse] [Prepare software key for activation]
- ☐ Hardware (USB key with z\_soil2016.pro is required)
- ☐ Hardware (HASP key is required) [Update HASP key]
- ☐ Network  
IP address or server name (not required for HASP key):

[Borrow a license] [Show borrowed licenses]

Computer name	HDD ID	Valid to
---------------	--------	----------

[Help] [Cancel] [OK]

6) Attach a generated *z\_soil2016.pro* to an email and send it to ZACE Ltd.  
([hotline@zsoil.com](mailto:hotline@zsoil.com))

7) On return, the user will be provided with the activated protection key (*z\_soil2016.pro* file)

8) Replace the existing *z\_soil2016.pro* file with a new file delivered by ZACE Ltd.

9) Once *z\_soil2016.pro* is replaced, the version v2016 is fully activated

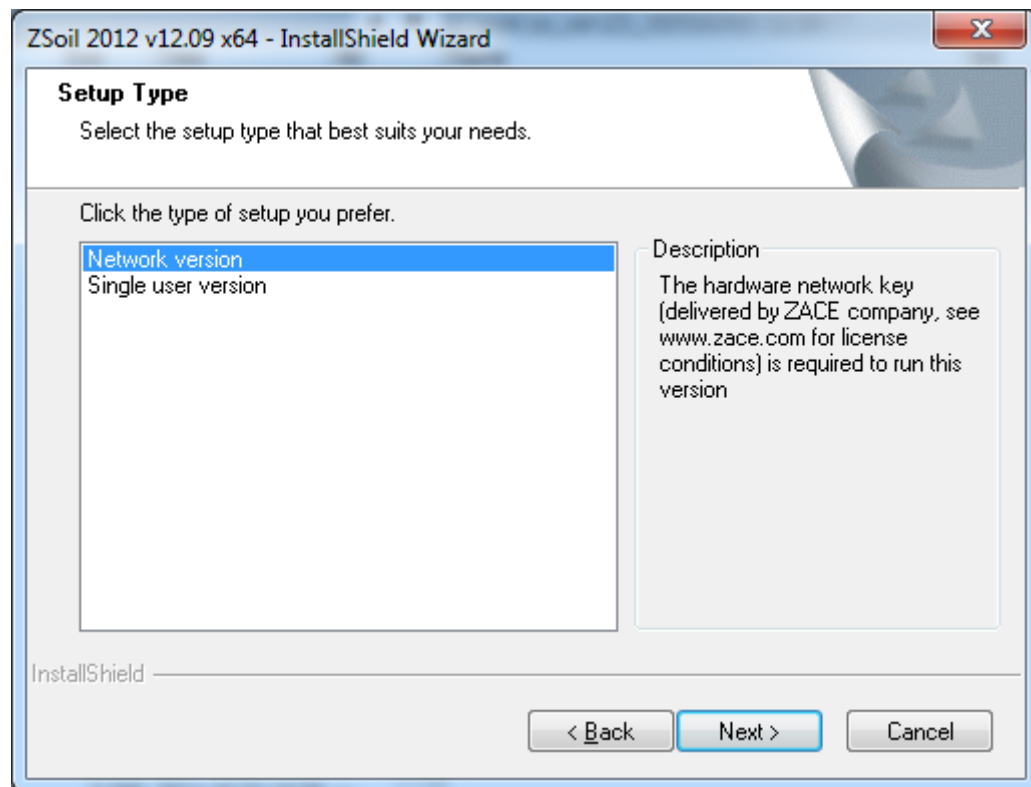


# How to activate the license for a network version?

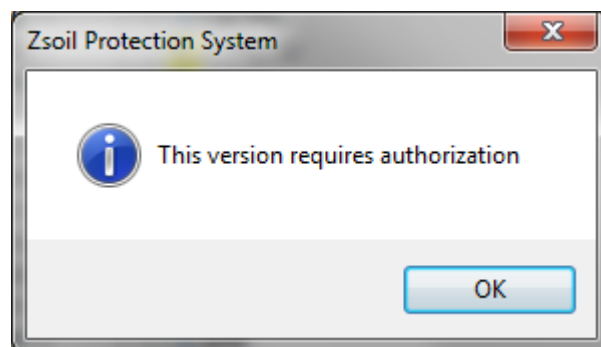
## Hardware key activation procedure on server machine

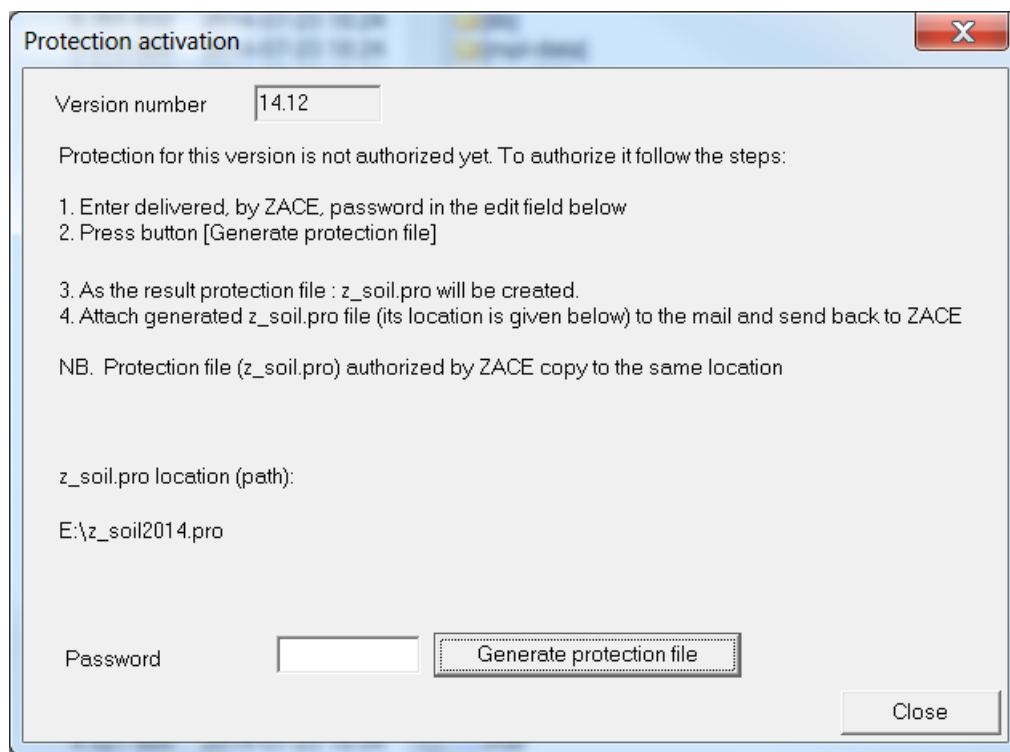
- 1) Plug your ZSoil hardware key to the USB port
- 2) Install the ZSoil v2016 from the pen drive delivered by ZACE Ltd

Choose **Network version** during a software installation

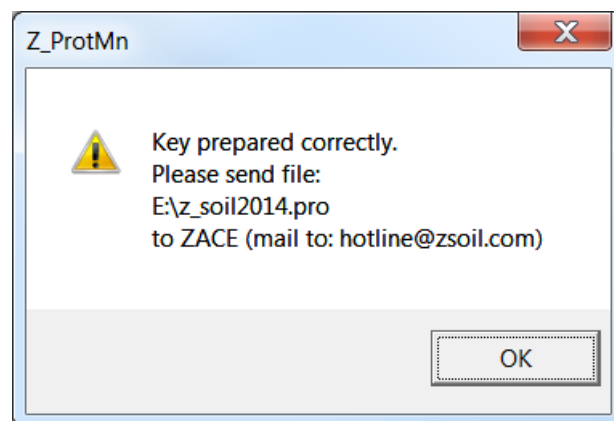


- 3) Run the ZSoil Network Protection Monitor  
(Start\All Programs\ZSoil 2016\Tools\ ZSoil Network Protection Monitor)
- 4) On the first run, the user be informed that an authorization of the protection key is required:





5) Enter the password and press the button “Generate protection file”

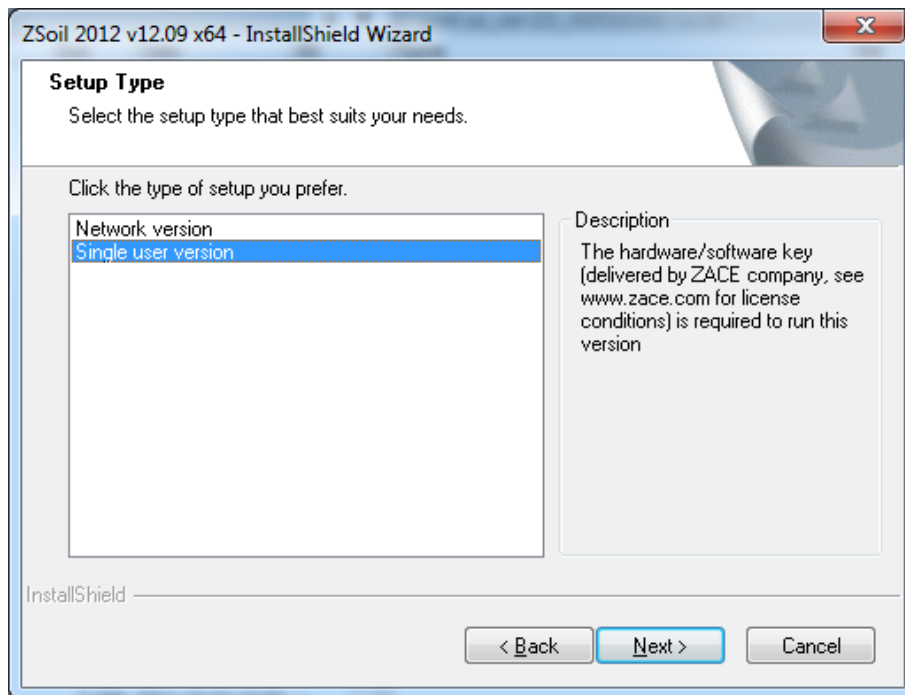


- 6) Attach the generated *z\_soil2016.pro* from a USB key to an email and send it to ZACE Ltd. ([hotline@zsoil.com](mailto:hotline@zsoil.com))
- 7) On return, the user will be provided with the activated protection key (*z\_soil2016.pro* file) which should be copied to the USB key

## Activation procedure on a node computer

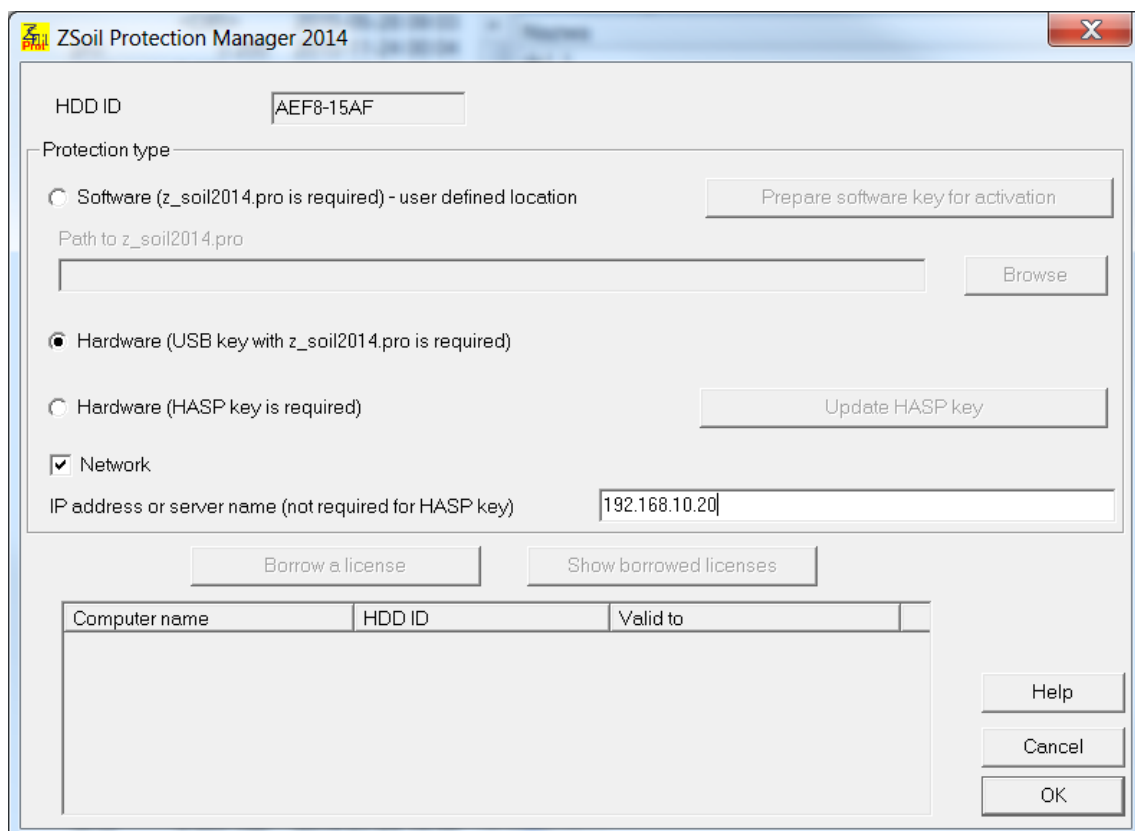
1) Install ZSoil v2016

Choose **Single user version** during software installation



2) Run the ZSoil Protection Manager

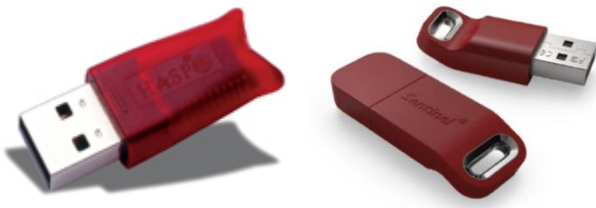
(Start\All Programs\ZSoil 2016\Tools\ ZSoil Protection Manager)



3) Choose the **Network** protection type and enter a **IP address** or **server name**

4) **ZSoil Network Protection Monitor** must be running in order to run ZSoil software on a **node computer**

## How to activate the license for a network version protected with HASP HL Net protection key ?

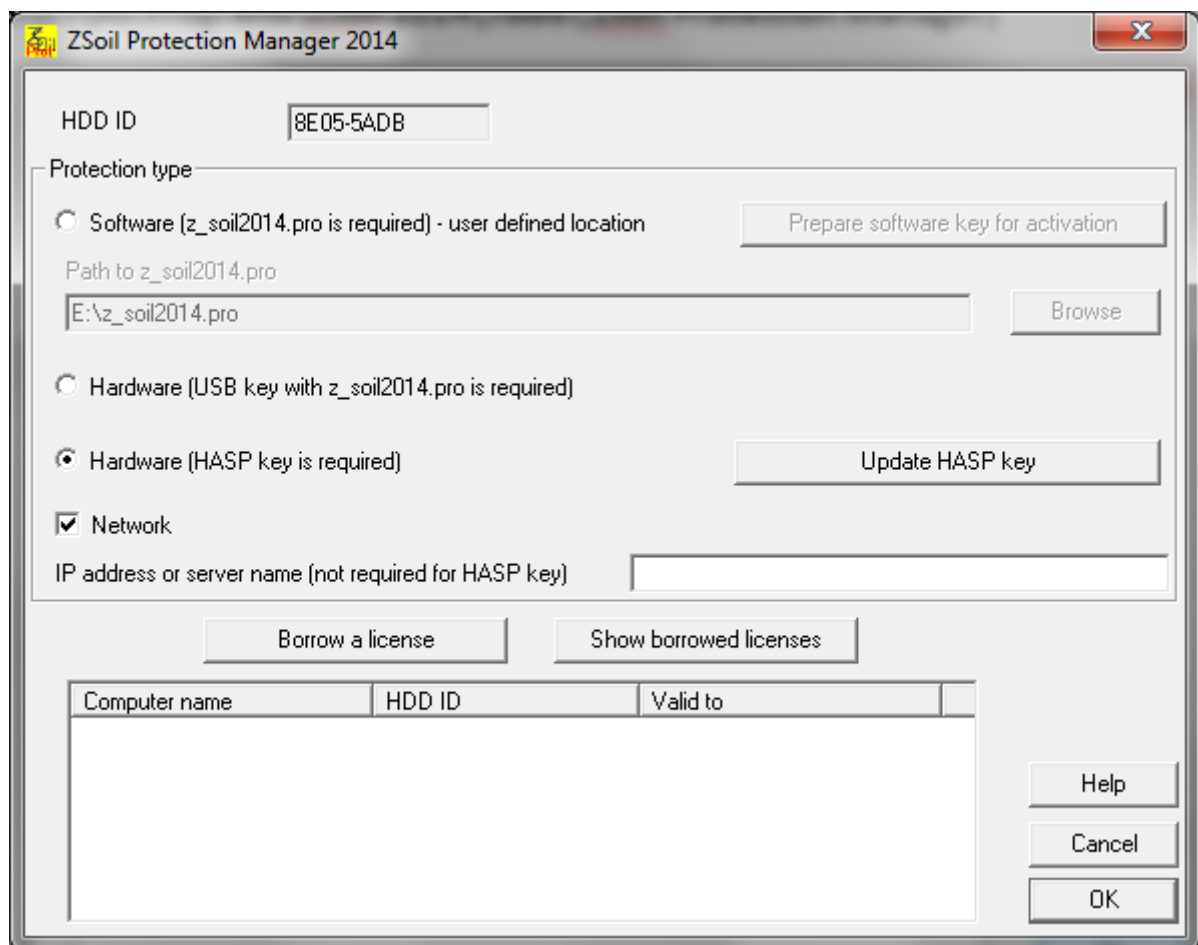


### HASP HL Net key

- 1) Download from [www.zsoil.com/downloads/HASPUserSetup.exe](http://www.zsoil.com/downloads/HASPUserSetup.exe) and install drivers for HASP HL protection key.

**Please note that HASP network dongle uses TCP/UDP port 1947 for local (LAN only) communication. This port must not be blocked in order for a station to access the network license.**

- 2) Run the ZSoil Protection Manager  
(Start\All Programs\ZSoil 2016\Tools\ ZSoil Protection Manager)



**ZSoil Protection Manager 2014**

HDD ID:

Protection type:

- ☐ Software (z\_soil2014.pro is required) - user defined location Prepare software key for activation
- ☐ Hardware (USB key with z\_soil2014.pro is required)
- ☒ Hardware (HASP key is required) Update HASP key
- ☒ Network

Path to z\_soil2014.pro:  Browse

IP address or server name (not required for HASP key):

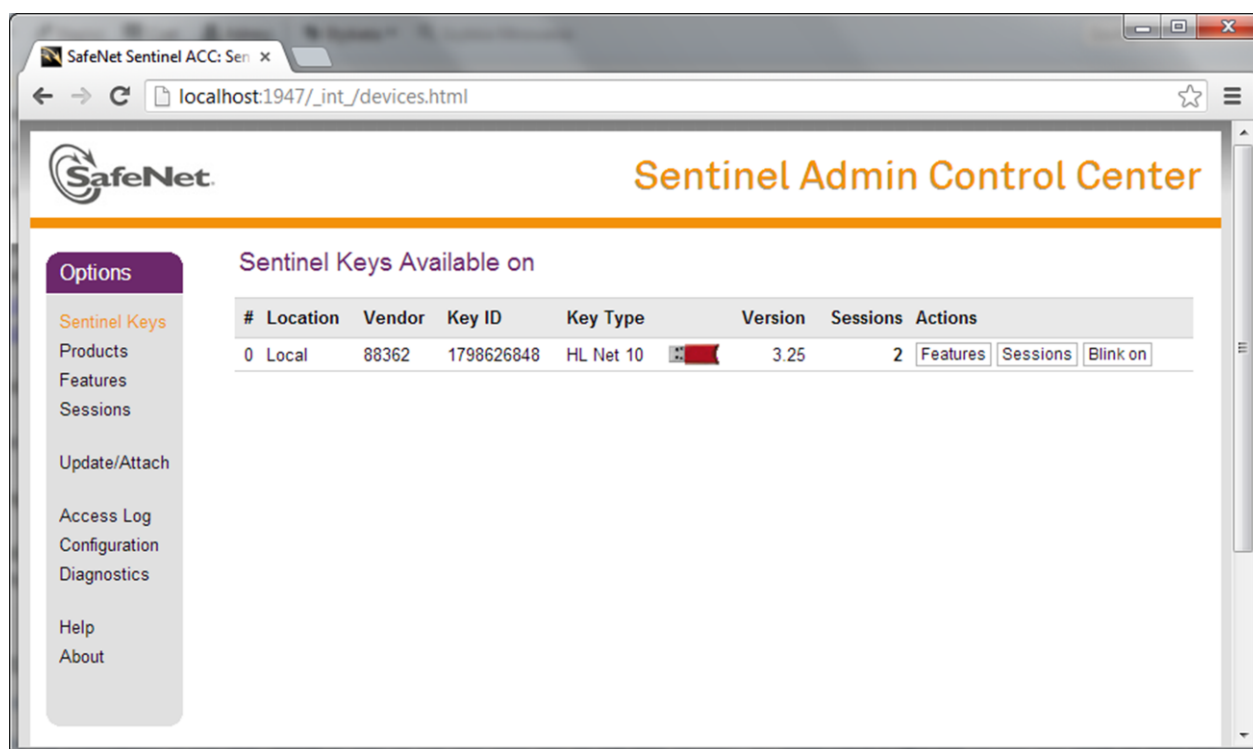
Borrow a license Show borrowed licenses

Computer name	HDD ID	Valid to

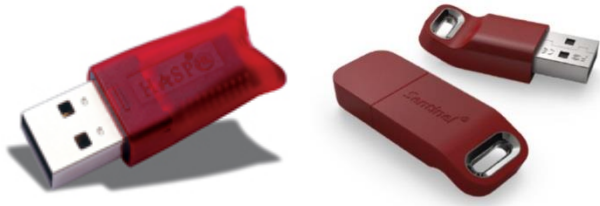
Help  
Cancel  
OK

- 3) Choose the **Hardware (HASP key is required)** protection type and check **Network** flag
- 4) Please close ZSoil Protection Manager with OK button

- 5) Status of the HASP key is monitored by Sentinel Admin Control Center.  
Run **http://localhost:1947** in a web browser in order to display current status of the HASP key.

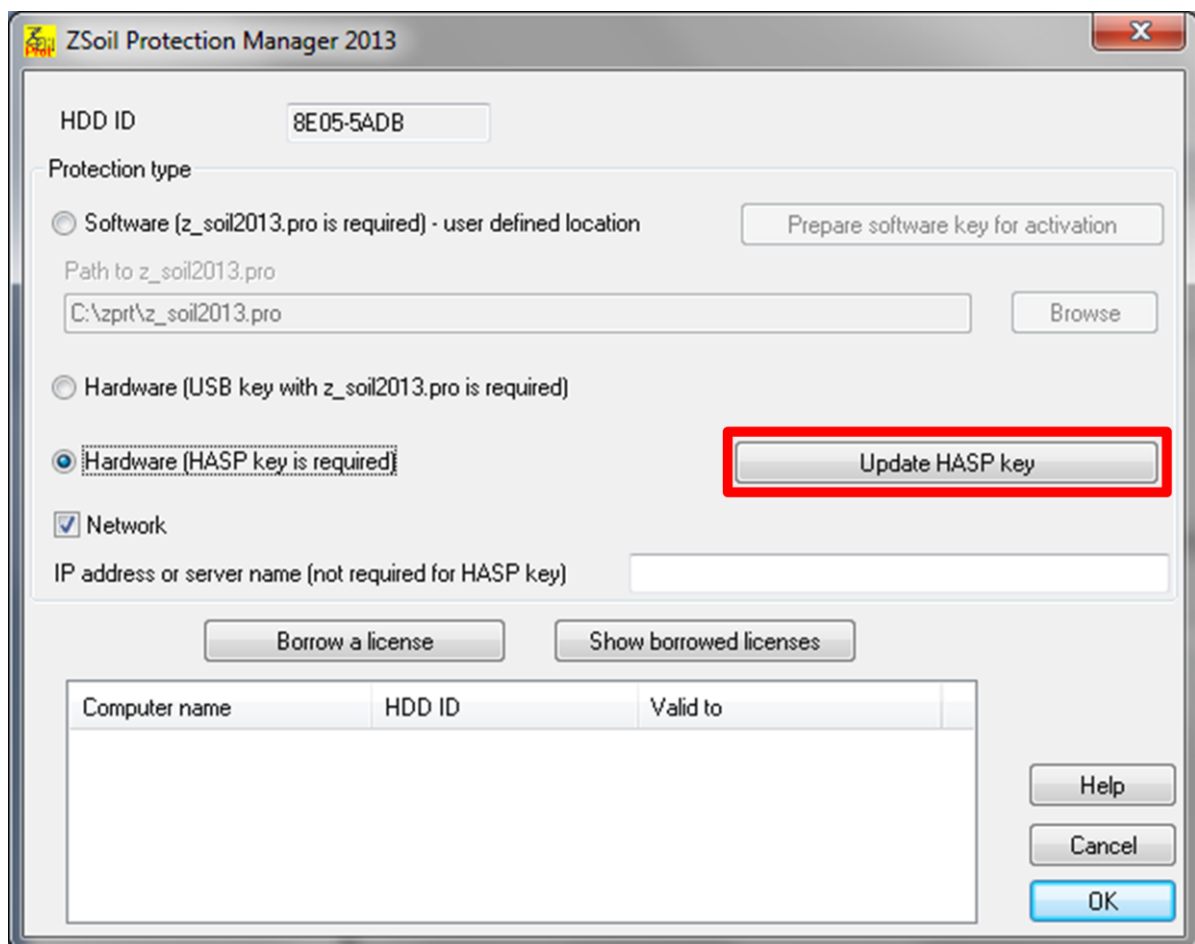


## How to update HASP HL Net protection key ?

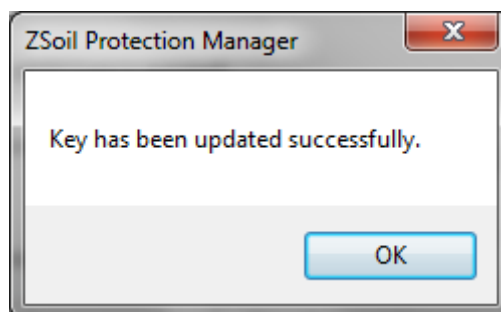
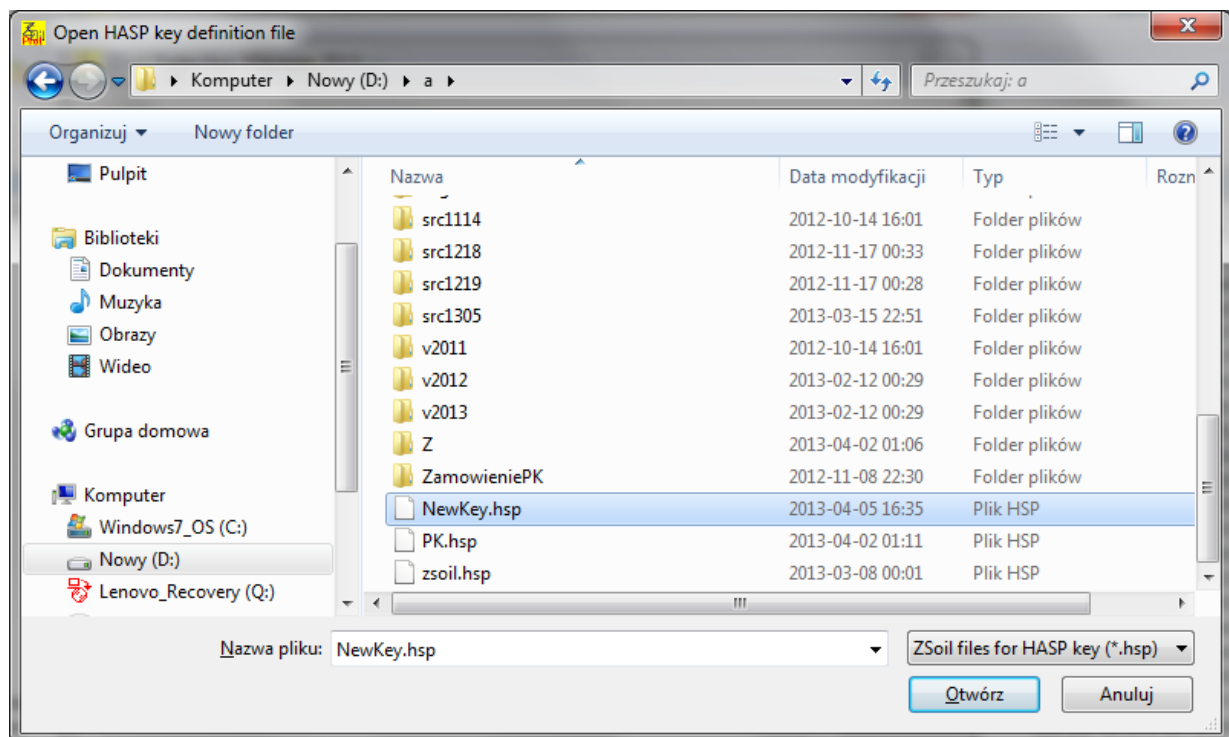


### HASP HL Net key

- 1) Run the ZSoil Protection Manager  
(Start\All Programs\ZSoil 2016\Tools\ ZSoil Protection Manager)
- 2) Press “Update HASP key” button

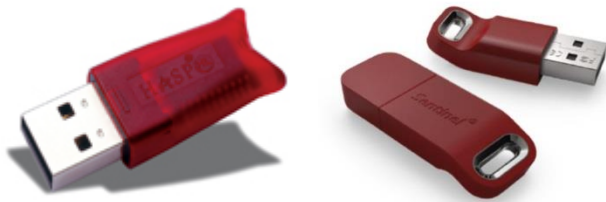


### 3) Open \*.hsp file provided by ZACE



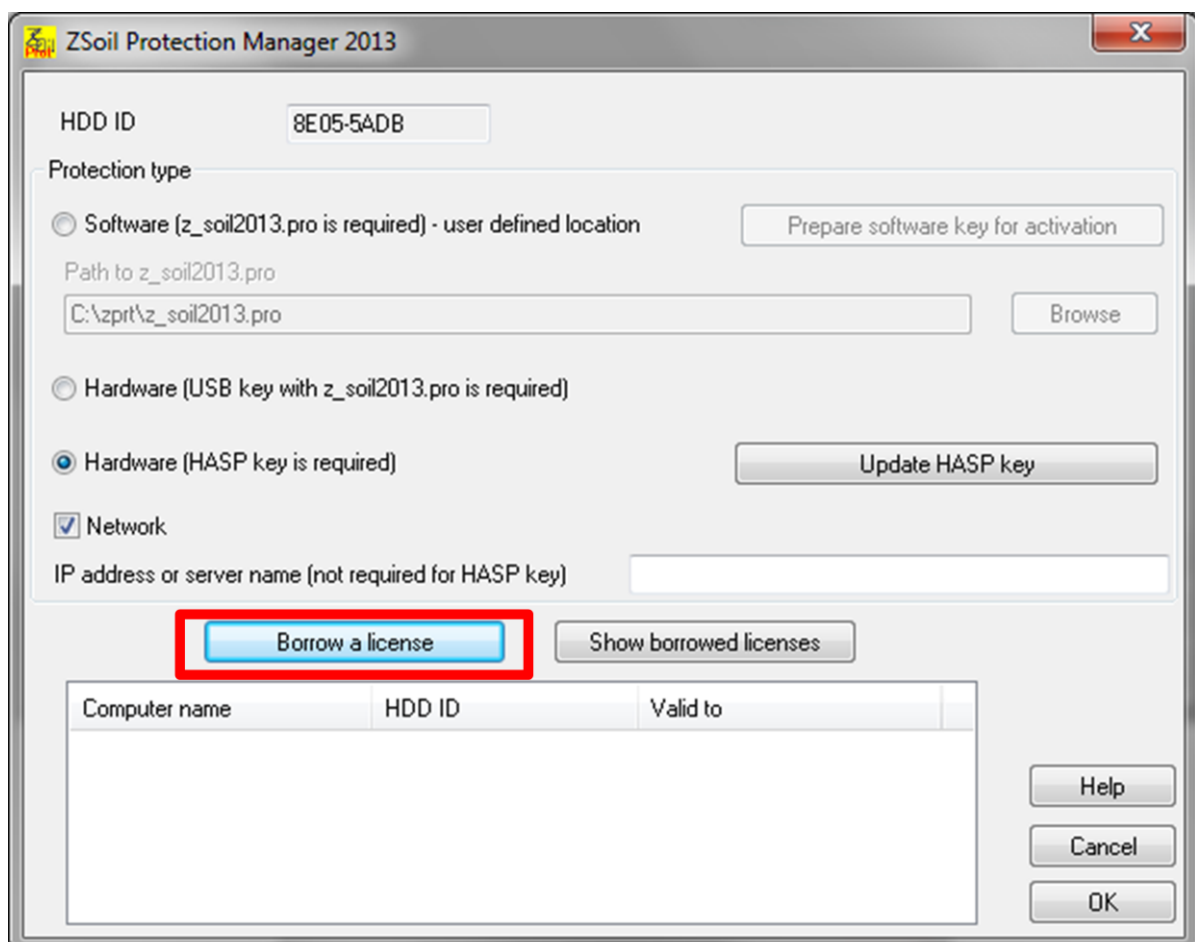
## How to borrow/return the license ?

**Procedure is valid for network version with HASP HL Net key.**



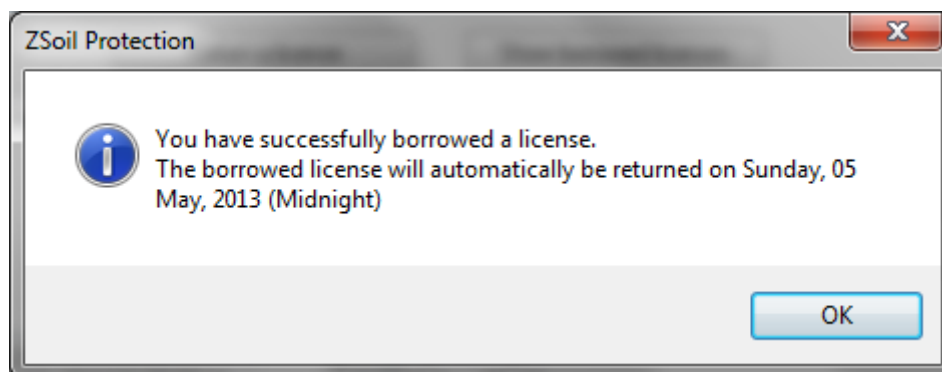
**HASP HL Net key**

- 1) Run the ZSoil Protection Manager  
(Start\All Programs\ZSoil 2016\Tools\ ZSoil Protection Manager)
- 2) Press “Borrow license” button. Computer has to be connected to the network with HASP HL Net key.

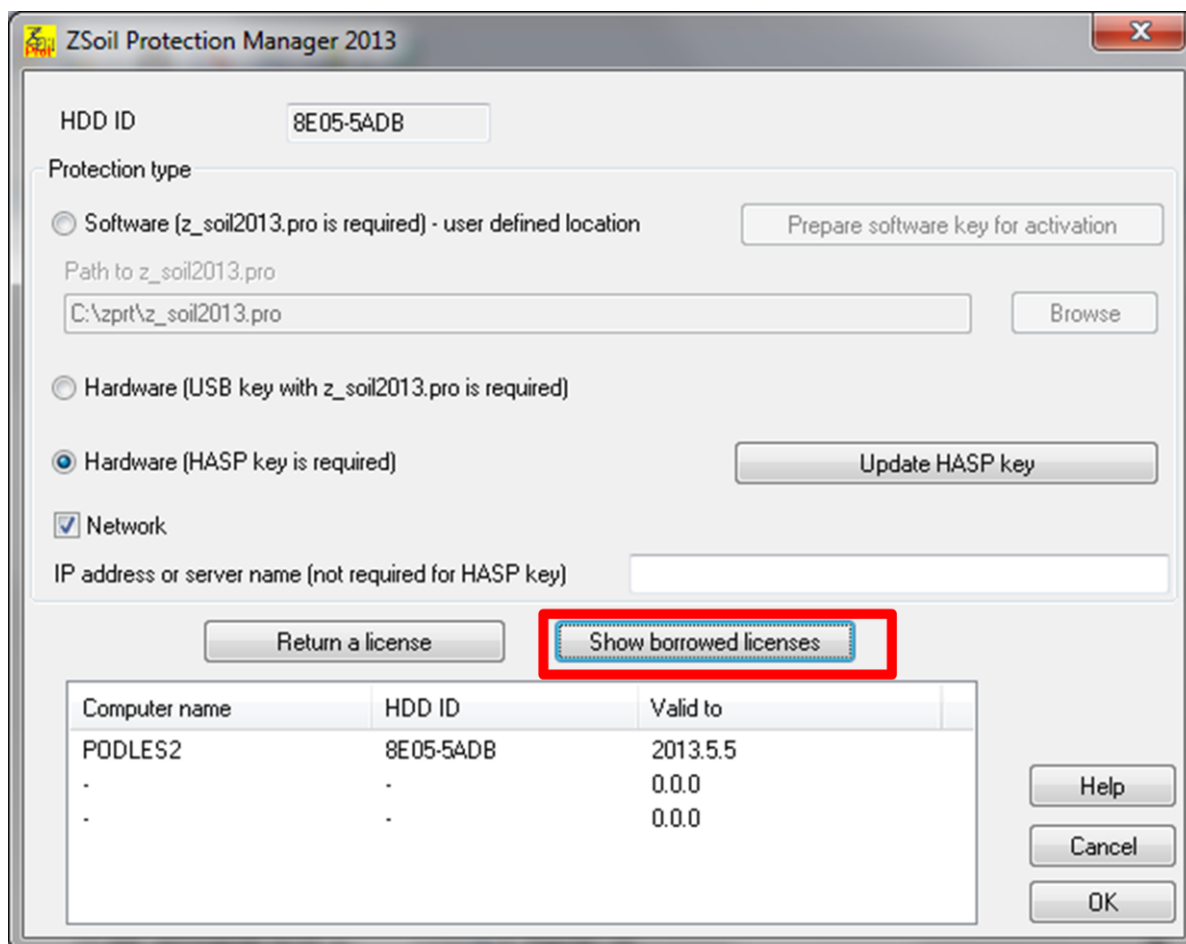




- 3) License is borrowed for 30 days and can be returned at any time before borrowing period.

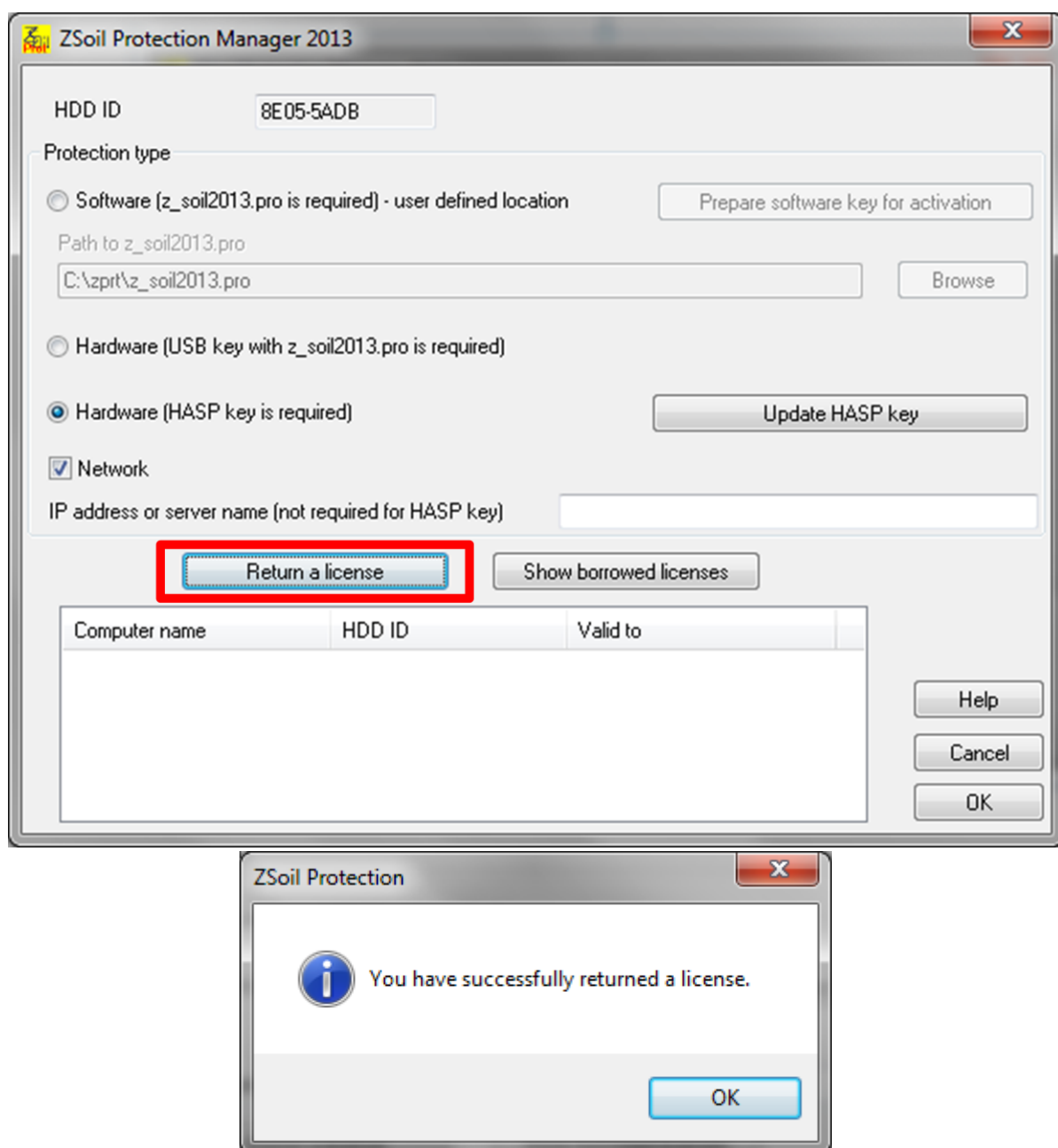


- 4) Press "Show borrowed licenses" button in order to display list of computers with borrowed license.



- 5) ZSoil can be run outside network with HASP HL Net key.

- 6) Press “Return license” button. Computer has to be connected to the network with HASP HL Net key.

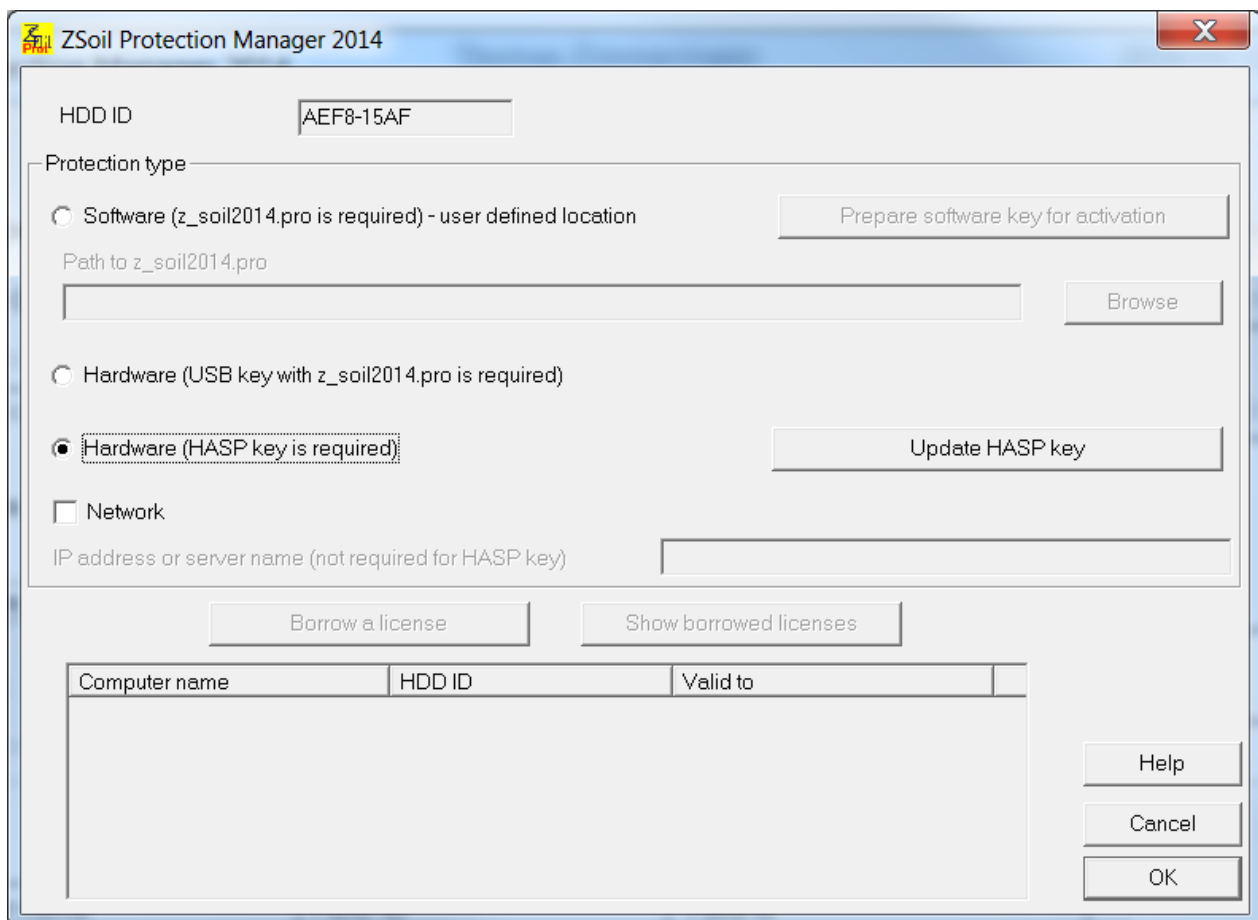


# How to activate the license for a single user version protected with HASP HL protection key ?



## HASP HL key

- 1) Download from [www.zsoil.com/downloads/HASPUserSetup.exe](http://www.zsoil.com/downloads/HASPUserSetup.exe) and install drivers for HASP HL protection key.
- 2) Run the ZSoil Protection Manager  
(Start\All Programs\ZSoil 2016\Tools\ ZSoil Protection Manager)



**ZSoil Protection Manager 2014**

HDD ID: AEF8-15AF

Protection type:

- ☐ Software (z\_soil2014.pro is required) - user defined location
- ☐ Hardware (USB key with z\_soil2014.pro is required)
- ☒ **Hardware (HASP key is required)**
- ☐ Network

Buttons: Prepare software key for activation, Update HASP key, Borrow a license, Show borrowed licenses

Computer name	HDD ID	Valid to
---------------	--------	----------

Buttons: Help, Cancel, OK

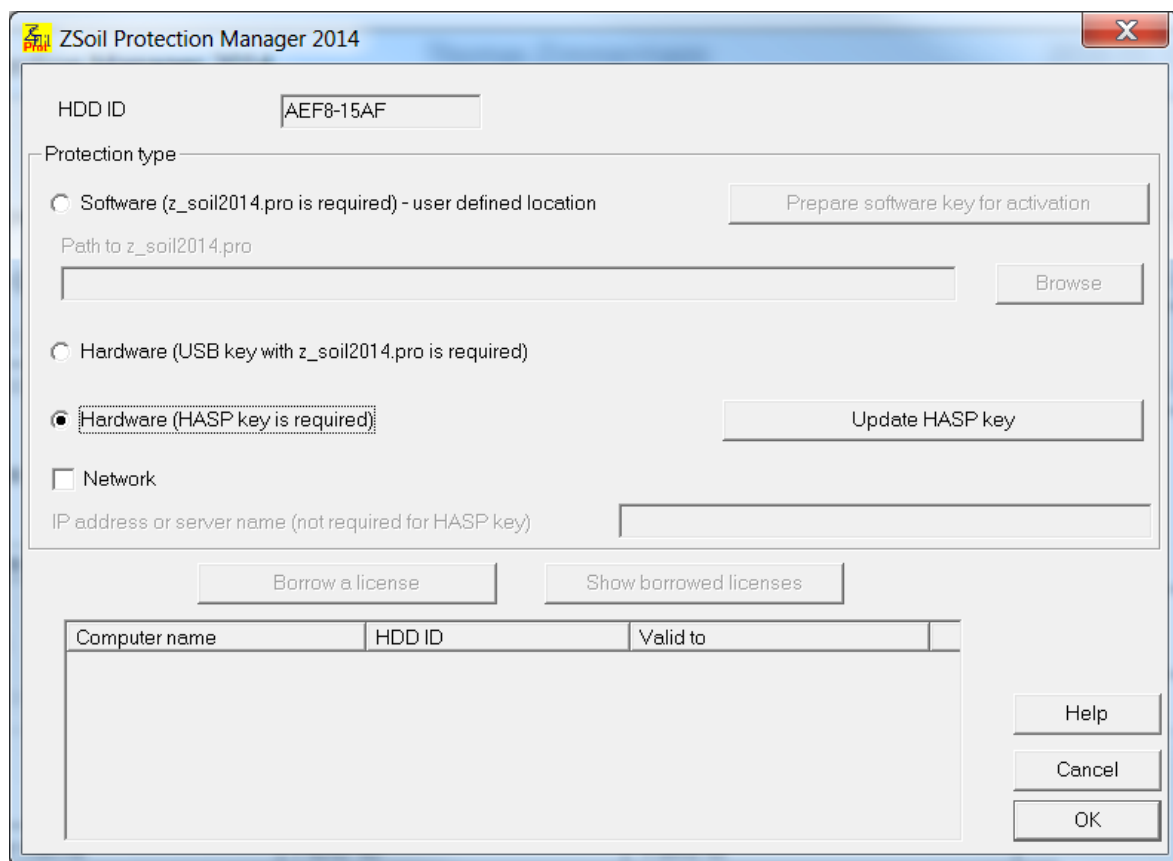
- 3) Choose the **Hardware (HASP key is required)** protection type
- 4) Please close ZSoil Protection Manager with OK button

# How to activate the license for a single user version protected with HASP HL protection key ?



## HASP HL key

- 1) Run **HASPUserSetup.exe** from **\HASP** folder in order to install drivers for HASP HL protection key
- 2) Run the ZSoil Protection Manager  
(Start\All Programs\ZSoil 2016\Tools\ ZSoil Protection Manager)



- 3) Choose the **Hardware (HASP key is required)** protection type
- 4) Please close ZSoil Protection Manager with OK button